

SWARCO

McCain TRAFFIC SIGNAL HOUSING

8" DIAMETER
12" DIAMETER
ALUMINUM
POLYCARBONATE



SWARCO McCain, Inc.'s Traffic Signal Housings provide a durable and low-maintenance housing for standard LED modules as well as incandescent optical assemblies. The housings are compliant with multiple agency standards including the Institute of Transportation Engineers, Caltrans, and most state Departments of Transportation. An industry leader in signal manufacturing and supply, SWARCO McCain, Inc. offers an extensive range of materials, configurations, and accessories, including backplates, visors, and signal assemblies, to meet your traffic signal requirements.



1-Section shown in federal yellow



3-Section shown in federal yellow

KEY FEATURES AND BENEFITS

- Modular design promotes flexible configuration options
- Fabricated from aluminum or polycarbonate with or without 10% fiberglass reinforcement
- 8" or 12" diameter
- Weathertight doors
- Custom hardware and terminal block locations available

PRODUCT DESCRIPTION

The McCain Traffic Signal Housing is modular in design, allowing a multitude of signal configurations for standard LEDs as well as McCain incandescent optical assemblies.

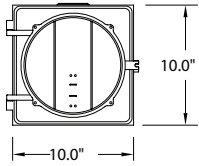
Available in polycarbonate and aluminum, each section is injection molded or cast in one piece. Reinforcement ribs and serrated ports, both top and bottom, provide strength and positive locking with other sections and mounting hardware. Positive latching of doors is achieved with stainless steel eyebolts and wing nut assemblies, and the doors feature four metal threaded inserts for visor attachment. A positive seal is assured with an EPDM rubber gasket creating a moisture-free and dust-tight atmosphere.

McCain Traffic Signal Housings are compatible with SWARCO McCain, Inc.'s backplates and visors, available in both aluminum and ABS. The top and bottom ports allow installation into many framework mounting assemblies.

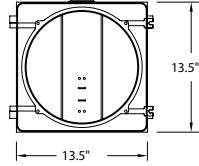
McCain TRAFFIC SIGNAL HOUSING

FRONT*

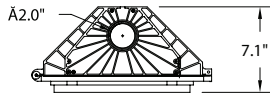
8" HOUSING



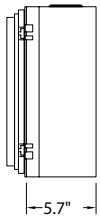
12" HOUSING



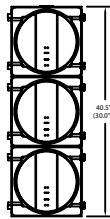
TOP*



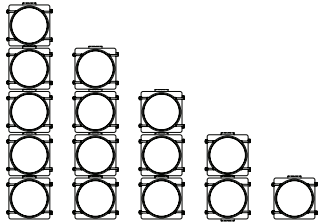
SIDE*



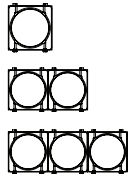
3-SECTION*¹



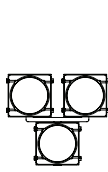
TYPICAL CONFIGURATIONS



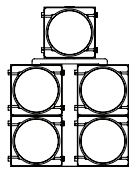
Vertical



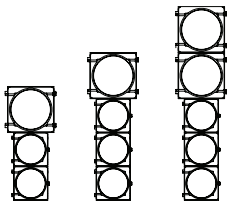
Horizontal



HAWK



Doghouse



Mixed Use

STANDARD FEATURES

- Modular sections, one-piece, injection molded or cast
- 72-tooth serrated boss and reinforcing ribs, top and bottom
- Brass threaded inserts for visor attachment (4)
- Housings have a cast boss for mounting a 5 or 6-position terminal block²
- Words red, amber, and green are cast next to each boss to identify light source lead wires
- 5 or 6-position terminal block installed in center section³
- Stainless steel door roll pins and eye bolt/wing nut assemblies
- Integral lugs on the housing and doors with stainless steel roll pins provide effective door hinges
- Weathertight EPDM rubber door gasket

GENERAL SPECIFICATIONS

	8" HOUSING	12" HOUSING
Dimensions ⁴ :	10"W x 10"H x 7"D	13.5"W x 13.5"H x 7"D
Material:	Aluminum: Type 360, reduced corrosion, increased powder coat adhesion Polycarbonate: Ultraviolet and heat stabilized, flame retardant, permanently colored, 10% fiberglass reinforcement	
Finishes:	Aluminum: Powder coated Polycarbonate: Colored resins integral to housing	
Colors:	Federal yellow, signal green, black, or custom colors	
Light Source:	LED or incandescent	
Mounting:	2.0" hole top and bottom fits 1.5" NPT fittings	
Environmental:	Operating temperature: -37°C to +74°C Humidity: 0 to 95% (non-condensing)	
Shipping Weight ⁵ :	Aluminum: 4 lbs Polycarbonate: 2.1 lbs	Aluminum: 7.8 lbs Polycarbonate: 4.2 lbs

OPTIONS

- Fiberglass-free polycarbonate
- Aluminum and polycarbonate housings can be mixed in one signal head
- Location, quantity, and type of terminal blocks
- Door hardware: permanent or removable⁶
- Visors
- Backplates
- Mounting: Various framework, orientation, and configurations
- High-performance (highly directional) signal version

Worldwide Distributors



Traffic Signal Division



30 Old Kings Hwy S.
Darien, CT 06820
(800) 947-1464

¹3-Section 12" housing shown; 3-section 8" housing dimensions listed in parenthesis

²One side of terminal block with fast-on terminals, the other side with screw terminals

³Alternate mounting available

⁴Dimensions rounded to the nearest 0.5"; 1-section

⁵Empty with out components; 1-section

⁶Permanent with roll pins or removable with clevis pins